

# Monthly Performance Report

Jan-18

## Peterborough Children's Services

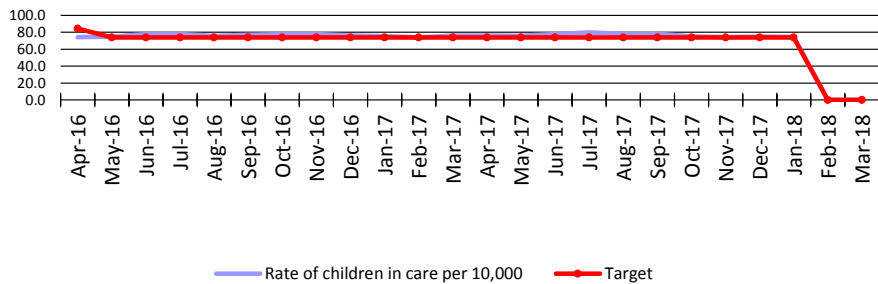
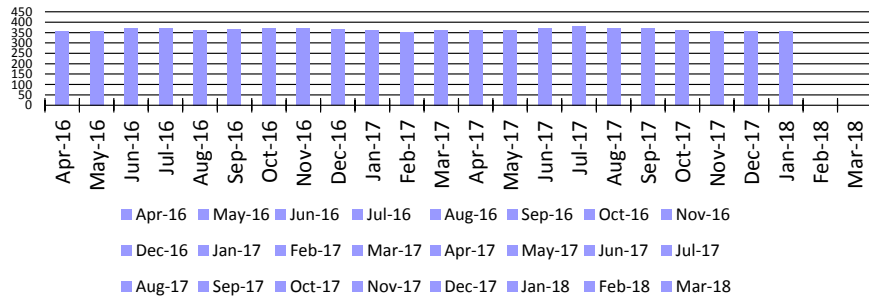
*"Change together for children"*



69

**FINAL**





Month	CIC -	Pop.	Rate of	Target	Variance	RAG
Apr-16	354	47715	74.2	84.4	-12.1%	A
May-16	358	47715	75.0	74.0	1.4%	A
Jun-16	371	47715	77.8	74.0	5.1%	R
Jul-16	371	47715	77.8	74.0	5.1%	R
Aug-16	362	47715	75.9	74.0	2.5%	A
Sep-16	366	47715	76.7	74.0	3.7%	R
Oct-16	372	47715	78.0	74.0	5.4%	R
Nov-16	371	47715	77.8	74.0	5.1%	R
Dec-16	364	47715	76.3	74.0	3.1%	A
Jan-17	361	47715	75.7	74.0	2.2%	A
Feb-17	352	47715	73.8	74.0	-0.3%	A
Mar-17	363	47715	76.1	74.0	2.8%	A
Apr-17	363	47715	76.1	74.0	2.8%	A
May-17	362	47715	75.9	74.0	2.5%	A
Jun-17	372	47715	78.0	74.0	5.4%	R
Jul-17	381	47715	79.8	74.0	7.9%	R
Aug-17	373	47715	78.2	74.0	5.6%	R
Sep-17	373	47715	78.2	74.0	5.6%	R
Oct-17	359	47715	75.2	74.0	1.7%	A
Nov-17	355	47715	74.4	74.0	0.5%	A
Dec-17	358	47715	75.0	74.0	1.4%	A
Jan-18	356	47715	74.6	74.0	0.8%	A
Feb-18						
Mar-18						

**CSC Commentary**

The number of children in care per 10,000 of the population in January decreased by 2 children. This is a slight increase on last month in relation to numbers at month end .

**Definition**

Number of children in care divided by the population of 0-17 year olds in Peterborough multiplied by 10,000

The number of children in care is taken as a snapshot count at the end of each month

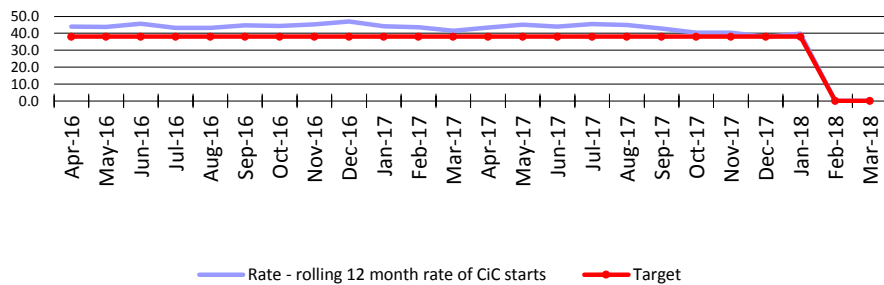
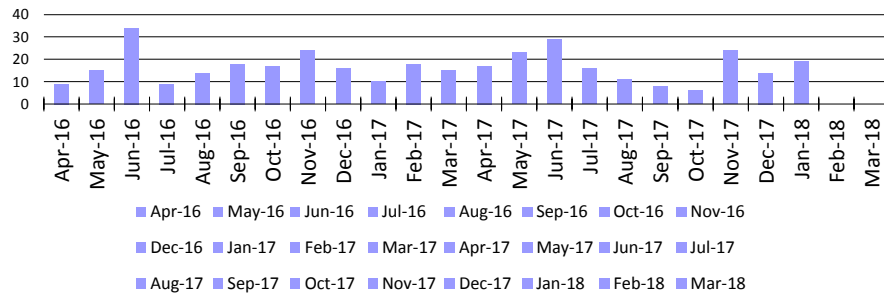
Population for denominator: 47715

G <=350	A>351-365	R>365
---------	-----------	-------

Year	PCC Result	SN Result	ENG Result
2014-15	73	79	60
2015-16	75	80	60
2016-17	73	82	62

Admissions of Children in Care per 10,000

Jan-18



Month	CiC -	12 Mths	Rate	Target	Variance	RAG
Apr-16	9	210	44.0	38.0	15.8%	A
May-16	15	209	43.8	38.0	15.3%	A
Jun-16	34	218	45.7	38.0	20.2%	A
Jul-16	9	206	43.2	38.0	13.6%	R
Aug-16	14	206	43.2	38.0	13.6%	R
Sep-16	18	213	44.6	38.0	17.5%	R
Oct-16	17	212	44.4	38.0	16.9%	R
Nov-16	24	216	45.3	38.0	19.1%	R
Dec-16	16	224	46.9	38.0	23.5%	R
Jan-17	10	211	44.2	38.0	16.4%	A
Feb-17	18	208	43.6	38.0	14.7%	A
Mar-17	15	198	41.5	38.0	9.2%	A
Apr-17	17	207	43.4	38.0	14.2%	A
May-17	23	215	45.1	38.0	18.6%	A
Jun-17	29	210	44.0	38.0	15.8%	A
Jul-17	16	217	45.5	38.0	19.7%	A
Aug-17	11	214	44.8	38.0	18.0%	A
Sep-17	8	204	42.8	38.0	12.5%	A
Oct-17	6	193	40.4	38.0	6.4%	A
Nov-17	24	193	40.4	38.0	6.4%	A
Dec-17	14	181	37.9	38.0	-0.2%	A
Jan-18	19	190	39.8	38.0	4.8%	A
Feb-18						
Mar-18						

CSC Commentary

Admissions per 10,000 for January saw an increase in children being accommodated on previous month

Definition

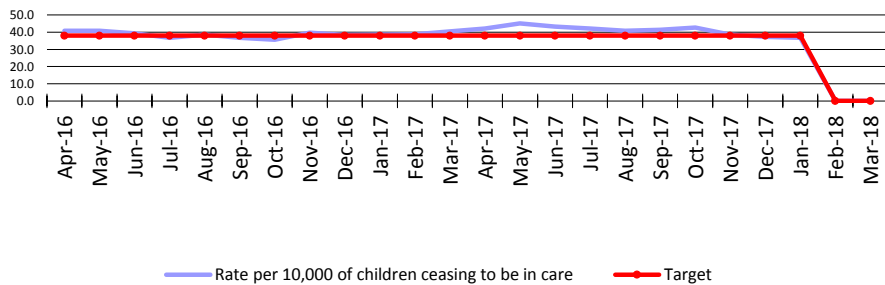
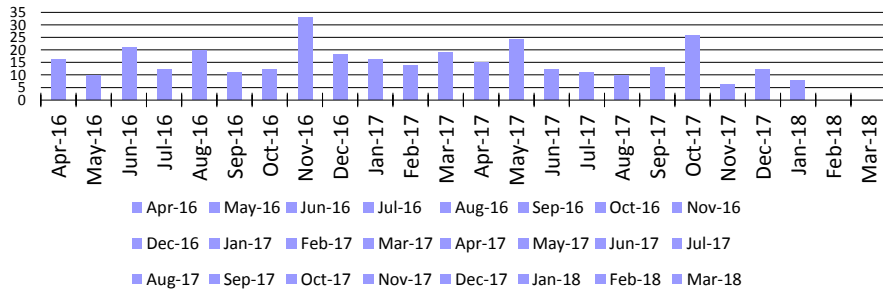
Children who came into care (rolling 12 months) divided by the population of 0-17 year olds in Peterborough multiplied by 10,000. If a child is admitted to care on more than one occasion then each time is counted in this indicator.

Population for denominator: 47715

G =	A >	R <
-----	-----	-----

Year	PCC Result	SN Result	ENG Result
2014-15	31	34	27
2015-16	42	31	27
2016-17	37	33	28

72



Month	CiC Ending -	12 Mths	Children ce	Target	Variance	RAG
Apr-16	16	195	40.9	38.0	7.5%	R
May-16	10	195	40.9	38.0	7.5%	R
Jun-16	21	188	39.4	38.0	3.7%	R
Jul-16	12	175	36.7	38.0	-3.5%	R
Aug-16	20	184	38.6	38.0	1.5%	R
Sep-16	11	175	36.7	38.0	-3.5%	R
Oct-16	12	170	35.6	38.0	-6.2%	G
Nov-16	33	189	39.6	38.0	4.2%	A
Dec-16	18	183	38.4	38.0	0.9%	A
Jan-17	16	184	38.6	38.0	1.5%	A
Feb-17	14	185	38.8	38.0	2.0%	A
Mar-17	19	193	40.4	38.0	6.4%	A
Apr-17	15	201	42.1	38.0	10.9%	A
May-17	24	215	45.1	38.0	18.6%	A
Jun-17	12	206	43.2	38.0	13.6%	A
Jul-17	11	201	42.1	38.0	10.9%	A
Aug-17	10	195	40.9	38.0	7.5%	A
Sep-17	13	197	41.3	38.0	8.6%	A
Oct-17	26	204	42.8	38.0	12.5%	A
Nov-17	6	184	38.6	38.0	1.5%	A
Dec-17	12	178	37.3	38.0	-1.8%	A
Jan-18	8	175	36.7	38.0	-3.5%	A
Feb-18						
Mar-18						

**CSC Commentary**

8 children ceased to be accommodated in January. This is a reduction as a number of young people reached 18 years in this month as well as being adopted and ceasing s.20 accommodation.

**Definition**

Number of children who ceased to be in care (rolling 12 months) divided by the population of 0-17 year olds in Peterborough multiplied by 10,000. If a child ceased to be in care on more than one occasion then each time is counted in this indicator.

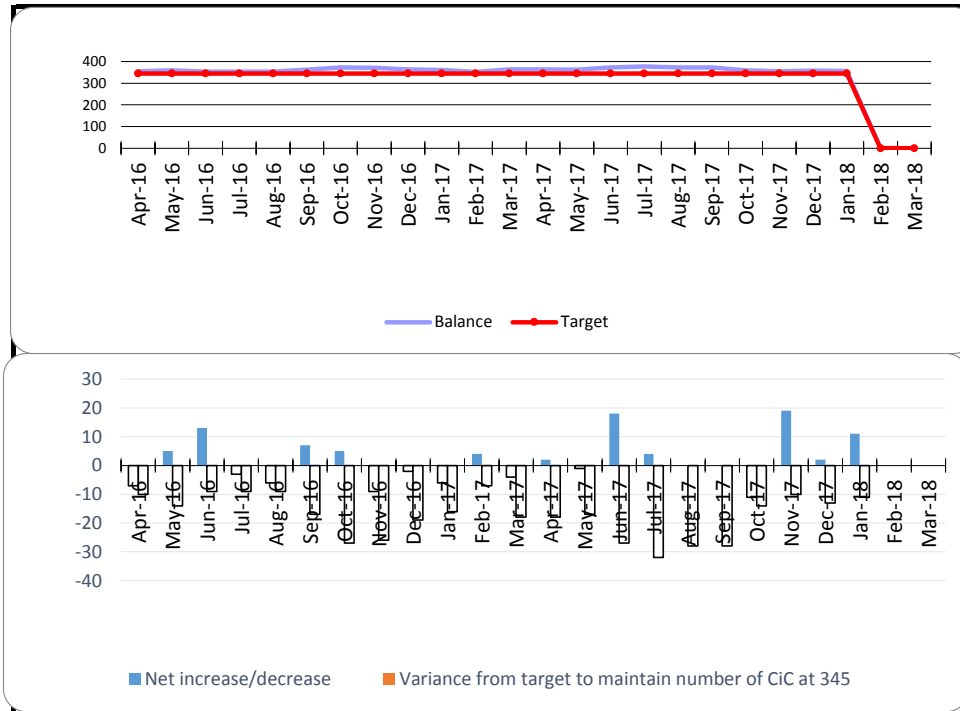
Population for denominator: 47715

G =	A >	R <
-----	-----	-----

Year	PCC Result	SN Result	ENG Result
2014-15	36	32	27
2015-16	39	31	27
2016-17	38	31	27

# Net change in number of Children in Care

Jan-18



Month	CiC Start	CiC End	Net i	Balance	Target	Variance	RAG
Apr-16	9	16	-7	355	345.0	-10	A
May-16	15	10	5	359	345.0	-14	A
Jun-16	34	21	13	354	345.0	-9	A
Jul-16	9	12	-3	354	345.0	-9	A
Aug-16	14	20	-6	354	345.0	-9	A
Sep-16	18	11	7	362	345.0	-17	A
Oct-16	17	12	5	372	345.0	-27	A
Nov-16	24	33	-9	371	345.0	-26	A
Dec-16	16	18	-2	364	345.0	-19	A
Jan-17	10	16	-6	361	345.0	-16	A
Feb-17	18	14	4	352	345.0	-7	A
Mar-17	15	19	-4	363	345.0	-18	A
Apr-17	17	15	2	363	345.0	-18	A
May-17	23	24	-1	362	345.0	-17	A
Jun-17	29	11	18	372	345.0	-27	A
Jul-17	15	11	4	377	345.0	-32	R
Aug-17	10	10	0	373	345.0	-28	R
Sep-17	8	8	0	373	345.0	-28	R
Oct-17	6	17	-11	359	345.0	-14	A
Nov-17	24	5	19	355	345.0	-10	A
Dec-17	14	12	2	358	345.0	-13	A
Jan-18	19	8	11	356	345.0	-11	A
Feb-18							
Mar-18							

### CSC Commentary

The net change in the number of children in January was a swing with the numbers entering being more than those leaving the care system.

### Definition

Net change in the number of children in care

Population for denominator: 46600

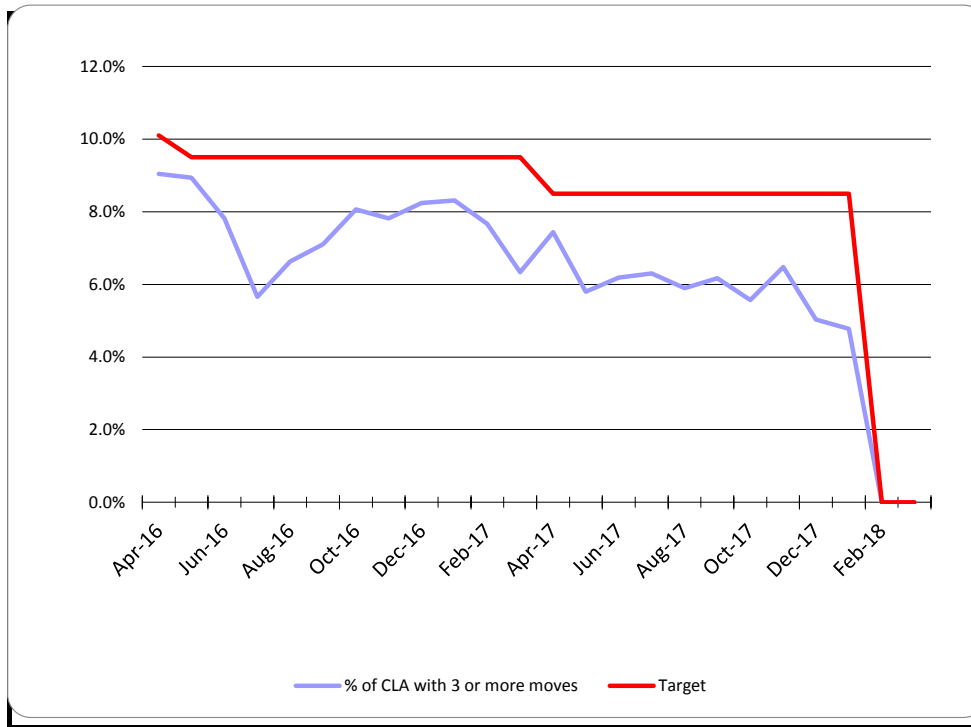
**G = 345**

**A = +/-20**

**R = +/-30**

Year	PCC Result	SN Result	ENG Result
2013-14	55.7	64.7	52.1
2014-15			
2016-17			

75



Month	Num.	Denom.	% of CLA with	Target	Variance	RAG
Apr-16	32	354	9.0%	10.1%	-1.1	G
May-16	32	358	8.9%	9.5%	-0.6	G
Jun-16	29	371	7.8%	9.5%	-1.7	G
Jul-16	21	371	5.7%	9.5%	-3.8	G
Aug-16	24	362	6.6%	9.5%	-2.9	A
Sep-16	26	366	7.1%	9.5%	-2.4	A
Oct-16	30	372	8.1%	9.5%	-1.4	G
Nov-16	29	371	7.8%	9.5%	-1.7	G
Dec-16	30	364	8.2%	9.5%	-1.3	G
Jan-17	30	361	8.3%	9.5%	-1.2	G
Feb-17	27	352	7.7%	9.5%	-1.8	G
Mar-17	23	363	6.3%	9.5%	-3.2	G
Apr-17	27	363	7.4%	8.5%	-1.1	G
May-17	21	362	5.8%	8.5%	-2.7	G
Jun-17	23	372	6.2%	8.5%	-2.3	G
Jul-17	24	381	6.3%	8.5%	-2.2	G
Aug-17	22	373	5.9%	8.5%	-2.6	G
Sep-17	23	373	6.2%	8.5%	-2.3	G
Oct-17	20	359	5.6%	8.5%	-2.9	G
Nov-17	23	355	6.5%	8.5%	-2.0	G
Dec-17	18	358	5.0%	8.5%	-3.5	G
Jan-18	17	356	4.8%	8.5%	-3.7	G
Feb-18						
Mar-18						

**CSC Commentary**

This target consistently remains in green and has done so for the last year.

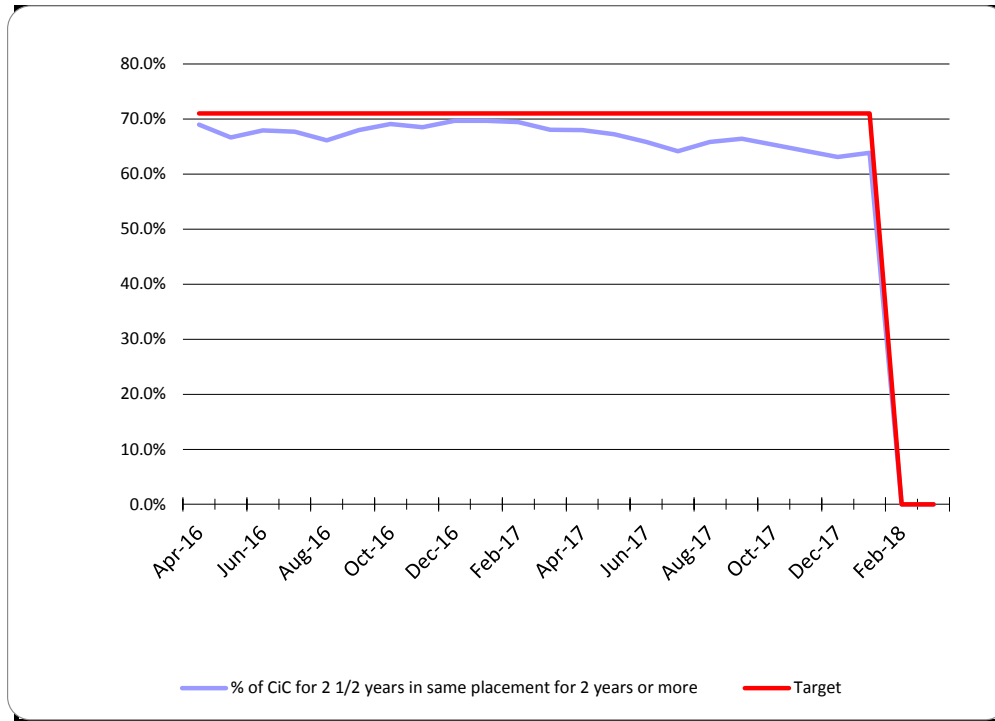
**Definition**

The percentage of children in care at any given time with three or more placements during the last 12 months.

Population for denominator: 46600

G <= 8.5%	A > 8.6-10%	R >10
-----------	-------------	-------

Year	PCC Result	SN Result	ENG Result
2013-14	9.0%	11.3%	11.0%
2014-15	8.5%		
2015-16			



Month	Num.	Denom.	% of CiC	Target	Variance	RAG
Apr-16	89	129	69.0%	71.0%	-2.0	R
May-16	86	129	66.7%	71.0%	-4.3	R
Jun-16	89	131	67.9%	71.0%	-3.1	R
Jul-16	88	130	67.7%	71.0%	-3.3	R
Aug-16	86	130	66.2%	71.0%	-4.8	R
Sep-16	85	125	68.0%	71.0%	-3.0	R
Oct-16	85	123	69.1%	71.0%	-1.9	A
Nov-16	87	127	68.5%	71.0%	-2.5	R
Dec-16	85	122	69.7%	71.0%	-1.3	A
Jan-17	85	122	69.7%	71.0%	-1.3	A
Feb-17	84	121	69.4%	71.0%	-1.6	A
Mar-17	83	122	68.0%	71.0%	-3.0	R
Apr-17	85	125	68.0%	71.0%	-3.0	R
May-17	82	122	67.2%	71.0%	-3.8	R
Jun-17	81	123	65.9%	71.0%	-5.1	R
Jul-17	77	120	64.2%	71.0%	-6.8	R
Aug-17	79	120	65.8%	71.0%	-5.2	R
Sep-17	83	125	66.4%	71.0%	-4.6	R
Oct-17	81	124	65.3%	71.0%	-5.7	R
Nov-17	79	123	64.2%	71.0%	-6.8	R
Dec-17	77	122	63.1%	71.0%	-7.9	R
Jan-18	76	119	63.9%	71.0%	-7.1	R
Feb-18						
Mar-18						

76

**CSC Commentary**

Placement stability for the month of January continues to see this performance indicator remain in red. Work is underway with TACT and the safeguarding unit to address this indicator

**Definition**

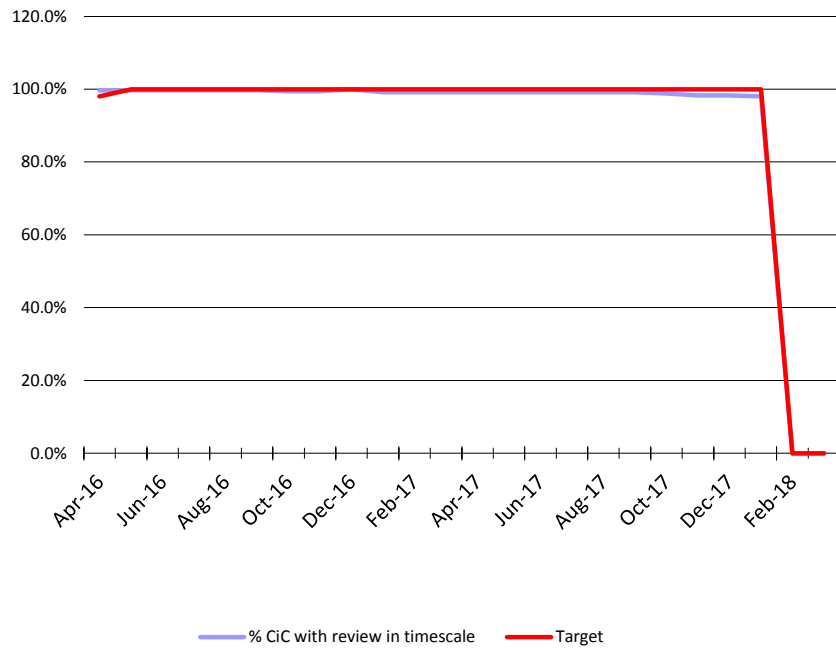
The percentage of children in care aged under 16 who had been in care continuously for at least 2.5 years who were living in the same placement for at least 2 years, or are placed for adoption and their adoptive placement together with their previous placement together last for at least 2 years.

Population for denominator: 46600

<b>G =71%</b>	<b>A 69%-71%</b>	<b>R &lt; 69%</b>
---------------	------------------	-------------------

Year	PCC Result	SN Result	ENG Result
2013-14	73.0%	69.1%	67.0%
2014-15			
2015-16			





Month	Num.	Denom.	% CiC	Target	Variance	RAG
Apr-16	347	348	99.7%	98.0%	1.7	A
May-16	350	351	99.7%	100.0%	-0.3	A
Jun-16	347	348	99.7%	100.0%	-0.3	A
Jul-16	365	366	99.7%	100.0%	-0.3	A
Aug-16	355	356	99.7%	100.0%	-0.3	A
Sep-16	353	354	99.7%	100.0%	-0.3	A
Oct-16	360	362	99.4%	100.0%	-0.6	A
Nov-16	352	354	99.4%	100.0%	-0.6	A
Dec-16	358	358	100.0%	100.0%	0.0	G
Jan-17	352	355	99.2%	100.0%	-0.8	A
Feb-17	349	352	99.1%	100.0%	-0.9	A
Mar-17	351	354	99.2%	100.0%	-0.8	A
Apr-17	349	352	99.1%	100.0%	-0.9	A
May-17	343	346	99.1%	100.0%	-0.9	A
Jun-17	351	354	99.2%	100.0%	-0.8	A
Jul-17	364	367	99.2%	100.0%	-0.8	A
Aug-17	368	371	99.2%	100.0%	-0.8	A
Sep-17	368	371	99.2%	100.0%	-0.8	A
Oct-17	345	349	98.9%	100.0%	-1.1	A
Nov-17	351	357	98.3%	100.0%	-1.7	A
Dec-17	352	358	98.3%	100.0%	-1.7	A
Jan-18	349	356	98.0%	100.0%	-2.0	A
Feb-18						
Mar-18						

**CSC Commentary**

January data for CIC reviews remain static from the previous month. This target is calculated on a rolling year and was analysed recently with the QA service. This will continue for the rest of the year.

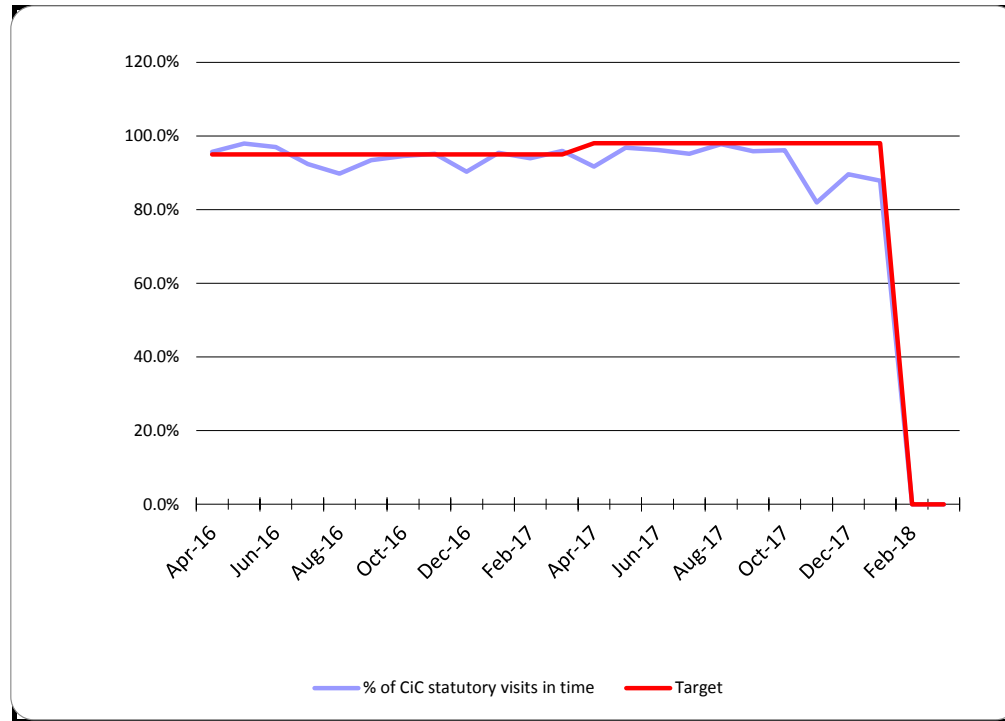
**Definition**

The percentage of Looked after children for at least one month, whose case was reviewed within the required timescales.

The denominator is children who are LAC for at least one month at the end of the reporting month. The numerator is the number of children who have not had a review in the last 12 months recorded as outside of timescale.

G = 100%	A > 98%	R < 98%
----------	---------	---------

77



Month	Num.	Denom.	% of	Target	Variance	RAG
Apr-16	333	348	95.7%	95.0%	0.7	A
May-16	339	346	98.0%	95.0%	3.0	R
Jun-16	327	337	97.0%	95.0%	2.0	G
Jul-16	327	354	92.4%	95.0%	-2.6	A
Aug-16	317	353	89.8%	95.0%	-5.2	A
Sep-16	325	348	93.4%	95.0%	-1.6	G
Oct-16	333	352	94.6%	95.0%	-0.4	A
Nov-16	332	349	95.1%	95.0%	0.1	R
Dec-16	316	350	90.3%	95.0%	-4.7	R
Jan-17	336	352	95.5%	95.0%	0.5	R
Feb-17	327	348	94.0%	95.0%	-1.0	G
Mar-17	334	348	96.0%	95.0%	1.0	G
Apr-17	320	349	91.7%	98.0%	-6.3	A
May-17	334	345	96.8%	98.0%	-1.2	A
Jun-17	334	347	96.3%	98.0%	-1.7	A
Jul-17	332	349	95.1%	98.0%	-2.9	A
Aug-17	357	365	97.8%	98.0%	-0.2	A
Sep-17	347	362	95.9%	98.0%	-2.1	A
Oct-17	345	359	96.1%	98.0%	-1.9	A
Nov-17	282	344	82.0%	98.0%	-16.0	R
Dec-17	309	345	89.6%	98.0%	-8.4	R
Jan-18	303	345	87.8%	98.0%	-10.2	R
Feb-18						
Mar-18						

**CSC Commentary**

This target for January saw an decrease in stat visits being undertaken and recorded on time due to staff vacancies.

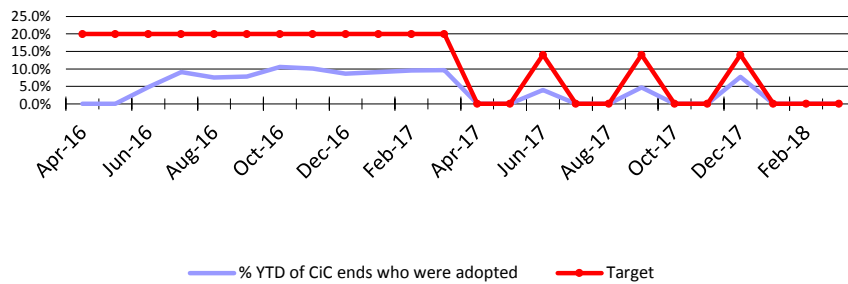
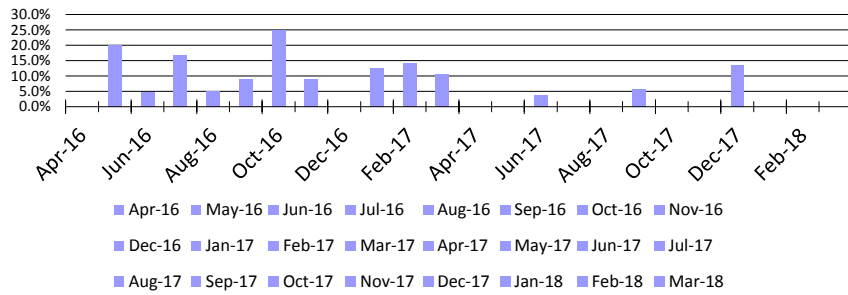
**Definition**

Of all Children in Care that have been looked after for more than 6 weeks, the number and percentage of visits that were completed within the 6 week deadline (or within three months for those Children in Care that have been looked after for more than 12 months and whose placement is deemed to be permanent). This is snapshot data taken at the month end.

**G = 98%**      **A > 97%-90**      **R < 90%**

Percentage of children adopted

Jan-18



Month	Adop.	CiC Ends	% monthly	% YTD	Target	Var	RAG
Apr-16	0	16	0.0%	0.0%	20.0%	-20.0	
May-16	2	10	20.0%	0.0%	20.0%	-20.0	
Jun-16	1	21	4.8%	4.8%	20.0%	-15.2	
Jul-16	2	12	16.7%	9.1%	20.0%	-10.9	
Aug-16	1	20	5.0%	7.5%	20.0%	-12.5	
Sep-16	1	11	9.1%	7.8%	20.0%	-12.2	
Oct-16	3	12	25.0%	10.5%	20.0%	-9.5	
Nov-16	3	33	9.1%	10.1%	20.0%	-9.9	
Dec-16	0	18	0.0%	8.7%	20.0%	-11.3	
Jan-17	2	16	12.5%	9.1%	20.0%	-10.9	
Feb-17	2	14	14.3%	9.6%	20.0%	-10.4	
Mar-17	2	19	10.5%	9.7%	20.0%	-10.3	
Apr-17							
May-17							
Jun-17	2	51	3.9%	3.9%	14.0%	-10.1	R
Jul-17							
Aug-17							
Sep-17	2	34	5.9%	4.7%	14.0%	-9.3	R
Oct-17							
Nov-17							
Dec-17	6	44	13.6%	7.8%	14.0%	-6.2	A
Jan-18							
Feb-18							
Mar-18							

<b>YTD:</b>	<b>10</b>	<b>129</b>	<b>--</b>	<b>7.8%</b>	<b>20.0%</b>	<b>-12.2</b>	<b>R</b>
-------------	-----------	------------	-----------	-------------	--------------	--------------	----------

**Definition**  
The number of children adopted as a percentage of the number of children who ceased to be in care

**G =14%**      **A 9-13%**      **R < 8%**

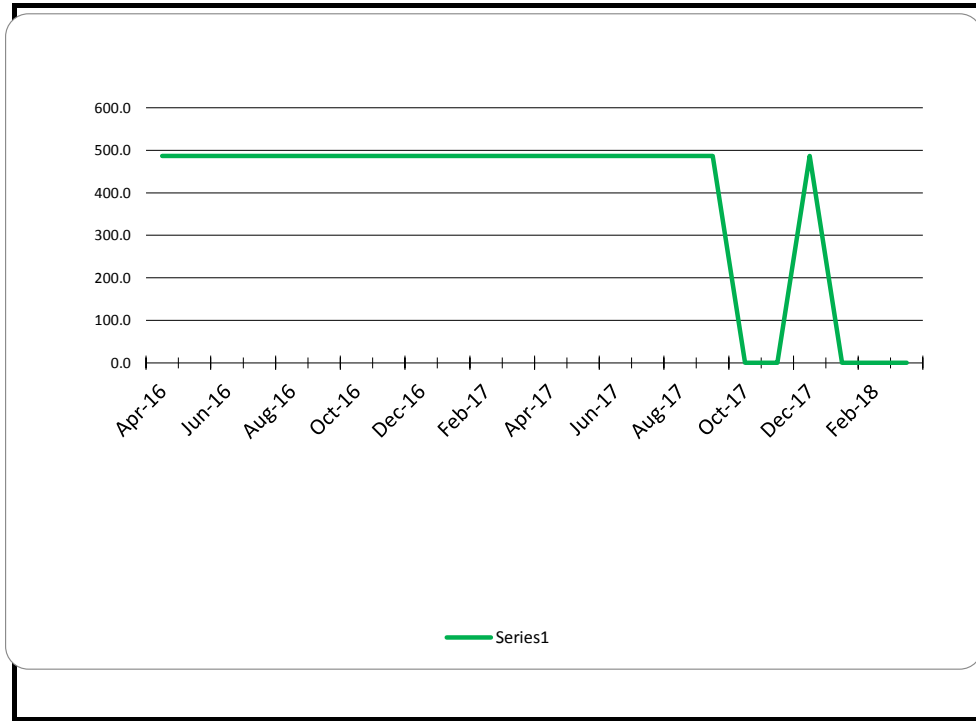
Year	PCC Result	SN Result	ENG Result
2014-15	19.0%	24.0%	17.0%
2015-16	17.0%	21.0%	15.0%
2016-17	13.0%	22.5%	14.0%

CSC Commentary

This is reported on quarterly

79

08



Month	Avg days
Apr-16	372
May-16	371
Jun-16	381
Jul-16	408
Aug-16	408
Sep-16	408
Oct-16	512
Nov-16	717
Dec-16	717
Jan-17	717
Feb-17	571
Mar-17	463
Apr-17	499
May-17	499
Jun-17	450
Jul-17	339
Aug-17	377
Sep-17	377
Oct-17	
Nov-17	
Dec-17	363
Jan-18	
Feb-18	
Mar-18	

Target	Var	RAG
487.0	-115	
487.0	-116	
487.0	-106	
487.0	-79	
487.0	-79	
487.0	-79	
487.0	25	
487.0	230	
487.0	230	
487.0	230	
487.0	84	
487.0	-24	
487.0	12	
487.0	12	
487.0	-37	
487.0	-148	
487.0	-110	
487.0	-110	
487.0	-124	G

**CSC Commentary**

This is reported on quarterly

**Definition:**

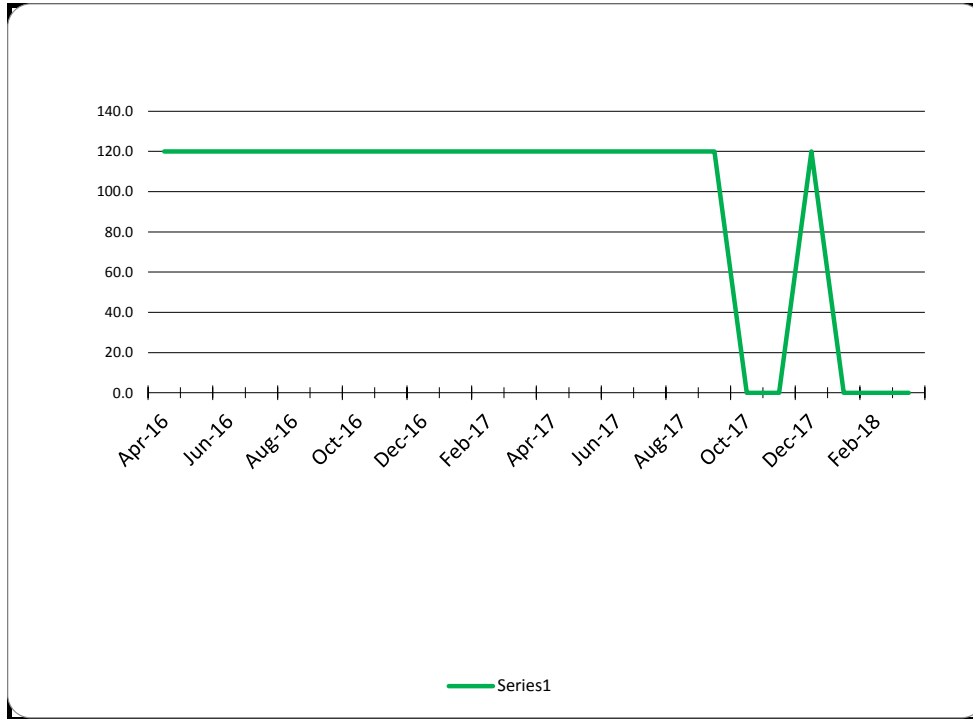
The average days between child entering care and moving in with a adoptive family and the average days between court agreeing adoption and LA approving a match. The monthly figures represent the cumulative total for the year to date.

**G <=487**      **A >**      **R**

Year	ER Result	ENG Result
2012-15	556.0	551.0
2013-16	499.0	491.0
2014-17		

Average days between court agreeing adoption and LA approving a match

Jan-18



Month	Avg days
Apr-16	176
May-16	176
Jun-16	185
Jul-16	216
Aug-16	216
Sep-16	216
Oct-16	247
Nov-16	183
Dec-16	183
Jan-17	183
Feb-17	150
Mar-17	121
Apr-17	441
May-17	441
Jun-17	255
Jul-17	170
Aug-17	197
Sep-17	197
Oct-17	
Nov-17	
Dec-17	148
Jan-18	
Feb-18	
Mar-18	

Target	Var	RAG
120.0	56.0	
120.0	56.0	
120.0	65.0	
120.0	96.0	
120.0	96.0	
120.0	96.0	
120.0	127.0	
120.0	63.0	
120.0	63.0	
120.0	63.0	
120.0	1.0	
120.0	321.0	
120.0	321.0	
120.0	135.0	
120.0	50.0	
120.0	77.0	
120.0	77.0	
120.0	28.0	R

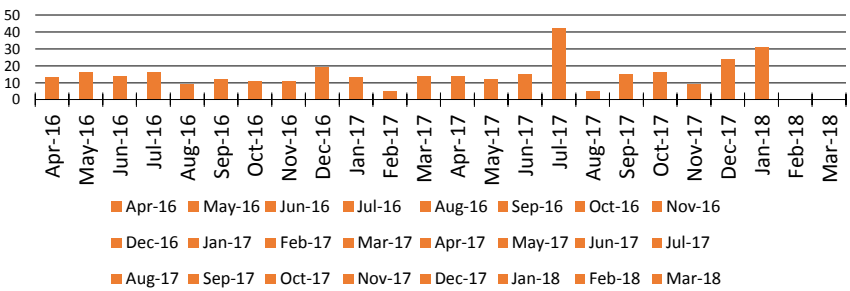
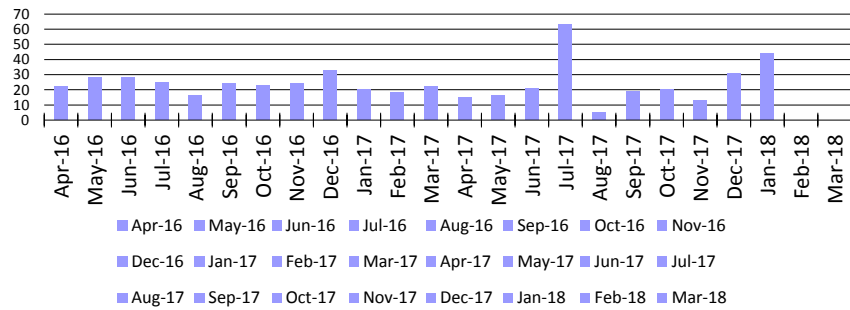
81

This is reported on quarterly

**Definition**  
 The average days between child entering care and moving in with a adoptive family and the average days between court agreeing adoption and LA approving a match. The monthly figures represent the cumulative total for the

**G <=120**      **A >**      **R <**

Year	PCC Result	ER Result	ENG Result
2012-15	256.0	200.0	223.0
2013-16	241.0	193.0	226.0
2014-17			



Month	Incidents	Individual
Apr-16	22	13
May-16	28	16
Jun-16	28	14
Jul-16	25	16
Aug-16	16	9
Sep-16	24	12
Oct-16	23	11
Nov-16	24	11
Dec-16	33	19
Jan-17	20	13
Feb-17	18	5
Mar-17	22	14
Apr-17	15	14
May-17	16	12
Jun-17	21	15
Jul-17	63	42
Aug-17	5	5
Sep-17	19	15
Oct-17	20	16
Nov-17	13	9
Dec-17	31	24
Jan-18	44	31
Feb-18		
Mar-18		

**CSC Commentary**

January saw an increase of 44 missing incidents linked to 31 young people. Assessment of the data indicates that there are possible links to gangs. Closer links with YOT team is underway to address this. This will take time.

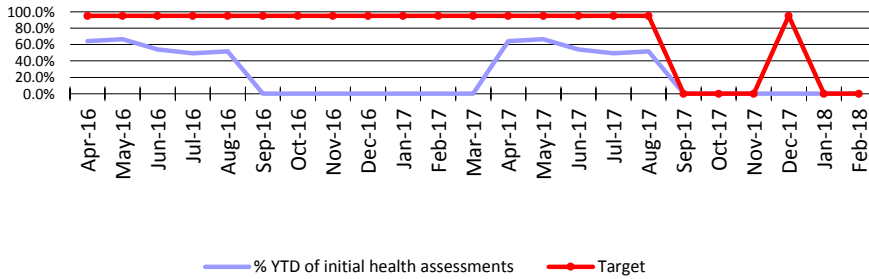
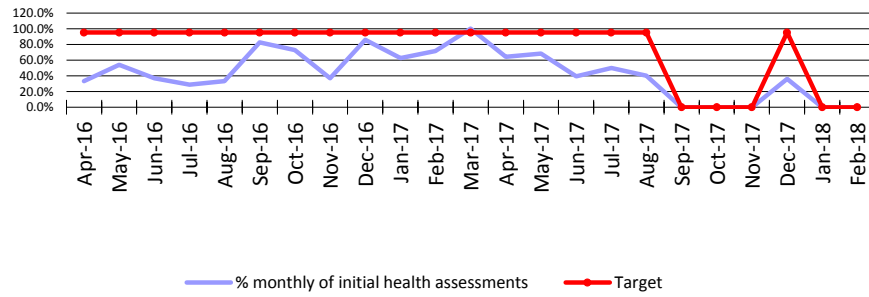
**Definition**

All missing incidents (including incidents occurring to CiC placed outside of Peterborough) for Children in Care recorded in the month; individuals is the number of children this involves (as some children may go missing more than once).



Initial health assessments completed within 20 working days of child entering care

Jan-18



Month	Init.HA	CiC St	%	% YTD	Target	Var	RAG
Apr-16	3	9	33.3%	64.3%	95.0%	-30.7	
May-16	7	13	53.8%	66.7%	95.0%	-28.3	
Jun-16	10	27	37.0%	54.1%	95.0%	-40.9	
Jul-16	2	7	28.6%	49.3%	95.0%	-45.7	
Aug-16	4	12	33.3%	51.8%	95.0%	-43.2	
Sep-16	14	17	82.4%	0.0%	95.0%	-95.0	
Oct-16	8	11	72.7%	0.0%	95.0%	-95.0	
Nov-16	7	19	36.8%	0.0%	95.0%	-95.0	
Dec-16	6	7	85.7%	0.0%	95.0%	-95.0	
Jan-17	5	8	62.5%	0.0%	95.0%	-95.0	
Feb-17	10	14	71.4%	0.0%	95.0%	-95.0	
Mar-17	2	2	100.0%	0.0%	95.0%	-95.0	
Apr-17	9	14	64.3%	64.3%	95.0%	-30.7	R
May-17	13	19	68.4%	66.7%	95.0%	-28.3	R
Jun-17	11	28	39.3%	54.1%	95.0%	-40.9	R
Jul-17	7	14	50.0%	49.3%	95.0%	-45.7	R
Aug-17	4	10	40.0%	51.8%	95.0%	-43.2	R
Sep-17							
Oct-17							
Nov-17							
Dec-17	14	39	35.9%		95.0%		R
Jan-18							
Feb-18							
Mar-18							
<b>YTD:</b>	<b>60</b>	<b>126</b>	<b>--</b>	<b>47.6%</b>	<b>95.0%</b>	<b>-47.4</b>	

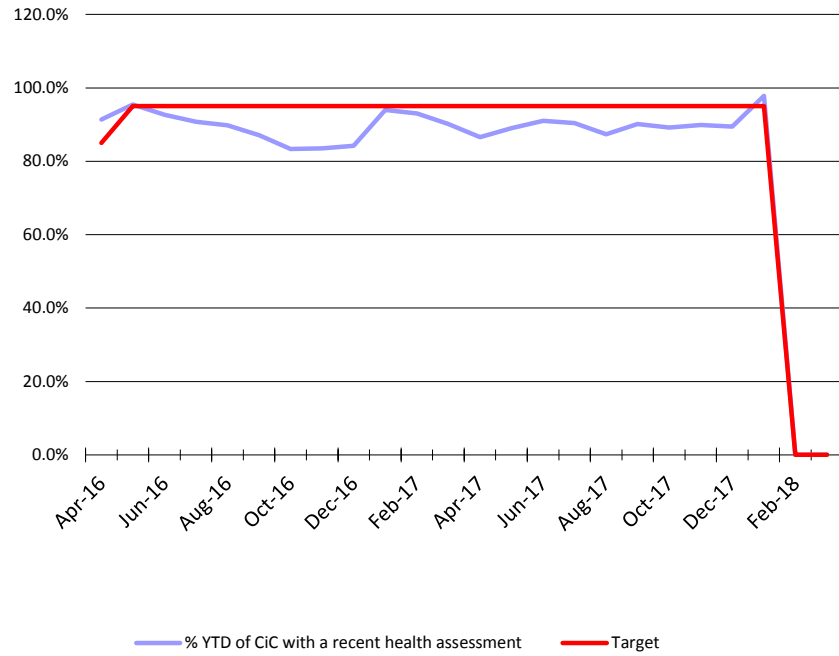
CSC Commentary

This is reported on quarterly

Definition

The number of children becoming looked after that have an initial health assessment recorded within 20 working days of the child entering care. The number of children is measured one month in arrears to enable time for the 20 day period to elapse and excludes cases where the episode of care was closed within 20 days and also children entering care because they have been placed on remand (because the remand institution is responsible for completing the initial health assessment).

G >= 95%	A > 85 -95%	R < 85%
----------	-------------	---------



Month	Num.	Denom.	% YTD	Target	Variance	RAG
Apr-16	211	231	91.3%	85.0%	6.3	A
May-16	230	241	95.4%	95.0%	0.4	A
Jun-16	215	232	92.7%	95.0%	-2.3	A
Jul-16	207	228	90.8%	95.0%	-4.2	A
Aug-16	211	235	89.8%	95.0%	-5.2	A
Sep-16	210	241	87.1%	95.0%	-7.9	A
Oct-16	200	240	83.3%	95.0%	-11.7	A
Nov-16	203	243	83.5%	95.0%	-11.5	A
Dec-16	203	241	84.2%	95.0%	-10.8	A
Jan-17	236	251	94.0%	95.0%	-1.0	A
Feb-17	240	258	93.0%	95.0%	-2.0	A
Mar-17	238	264	90.2%	95.0%	-4.8	A
Apr-17	225	260	86.5%	95.0%	-8.5	A
May-17	234	263	89.0%	95.0%	-6.0	A
Jun-17	242	266	91.0%	95.0%	-4.0	A
Jul-17	236	261	90.4%	95.0%	-4.6	A
Aug-17	228	261	87.4%	95.0%	-7.6	A
Sep-17	239	265	90.2%	95.0%	-4.8	A
Oct-17	232	260	89.2%	95.0%	-5.8	A
Nov-17	232	258	89.9%	95.0%	-5.1	A
Dec-17	228	255	89.4%	95.0%	-5.6	A
Jan-18	224	229	97.8%	95.0%	2.8	G
Feb-18						
Mar-18						

84

**CSC Commentary**

This target has improved and is now in green. This will continue to be monitored to ensure sustainability.

**Definition**

Of the children who had been in care for at least 12 months the proportion who had an annual health assessment during the previous 12 months.

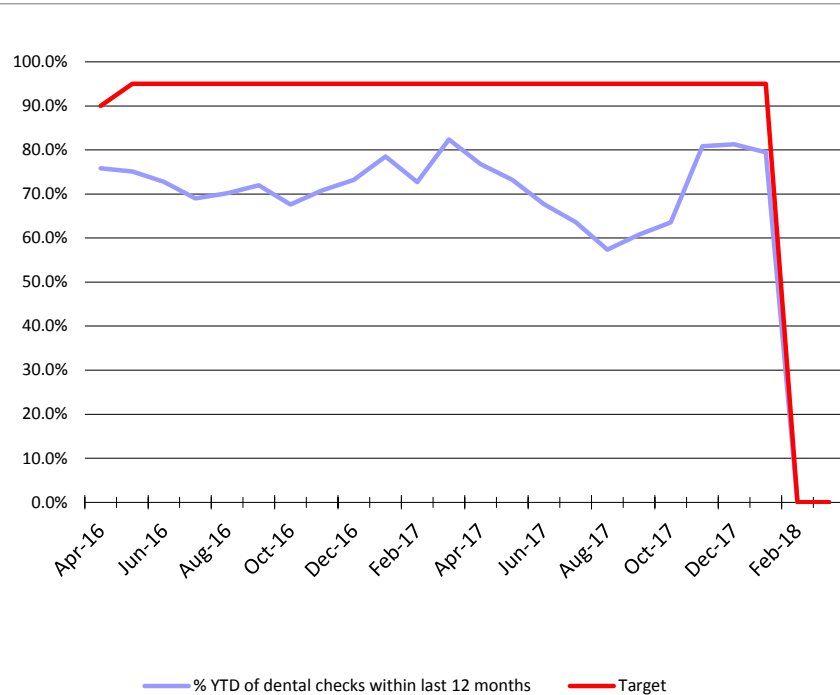
G >= 95%	A > 85%	R < 85%
----------	---------	---------

Year	PCC Result	SN Result	ENG Result
2014-15	88%	88%	90%
2015-16	96%	88%	90%
2016-17	95%	88%	89%



Children in care (aged 3-17 years) with dental checks held within previous 12 months

Jan-18



Month	Num.	Denom.	% YTD	Target	Variance	RAG
Apr-16	239	315	75.9%	90.0%	-14.1	R
May-16	235	313	75.1%	95.0%	-19.9	R
Jun-16	235	323	72.8%	95.0%	-22.2	R
Jul-16	223	323	69.0%	95.0%	-26.0	R
Aug-16	221	315	70.2%	95.0%	-24.8	R
Sep-16	226	314	72.0%	95.0%	-23.0	R
Oct-16	215	318	67.6%	95.0%	-27.4	R
Nov-16	226	319	70.8%	95.0%	-24.2	R
Dec-16	238	325	73.2%	95.0%	-21.8	R
Jan-17	252	321	78.5%	95.0%	-16.5	R
Feb-17	240	330	72.7%	95.0%	-22.3	R
Mar-17	271	329	82.4%	95.0%	-12.6	R
Apr-17	251	327	76.8%	95.0%	-18.2	R
May-17	238	325	73.2%	95.0%	-21.8	R
Jun-17	224	331	67.7%	95.0%	-27.3	R
Jul-17	217	341	63.6%	95.0%	-31.4	R
Aug-17	198	345	57.4%	95.0%	-37.6	R
Sep-17	208	342	60.8%	95.0%	-34.2	R
Oct-17	211	332	63.6%	95.0%	-31.4	R
Nov-17	266	329	80.9%	95.0%	-14.1	R
Dec-17	261	321	81.3%	95.0%	-13.7	R
Jan-18	260	327	79.5%	95.0%	-15.5	R
Feb-18						
Mar-18						

85

CSC Commentary

January has seen a decrease in performance figures. Further analysis indicates the focus needs to be with regard to clarifying children on short breaks and their legal status which is affecting this target. This is being addressed with the 0-25 service.

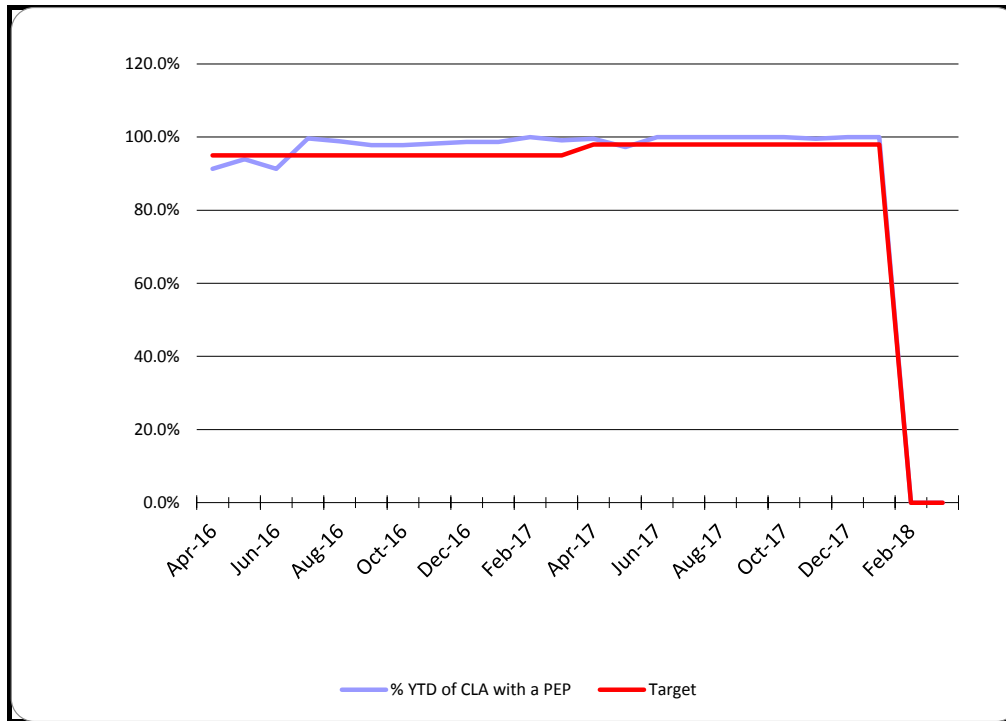
Definition

The percentage of children looked after who have had a dental check within the previous 12 months.

Children looked after aged between 3 and 17 years old that have a dental check recorded on Liquidlogic that was completed within the previous 12 months. The denominator is the number of children looked after (3 - 17) at the month end.

G >= 95%	A > 90%	R < 90%
----------	---------	---------

Year	PCC Result	SN Result	ENG Result
2014-15	90%	77%	86%
2015-16	90%	81%	84%
2016-17	95%	82%	83%



Month	Num.	Denom.	% YTD	Target	Variance	RAG
Apr-16	222	243	91.4%	95.0%	-3.6	G
May-16	233	248	94.0%	95.0%	-1.0	G
Jun-16	232	254	91.3%	95.0%	-3.7	G
Jul-16	253	254	99.6%	95.0%	4.6	G
Aug-16	250	253	98.8%	95.0%	3.8	G
Sep-16	219	224	97.8%	95.0%	2.8	G
Oct-16	219	224	97.8%	95.0%	2.8	G
Nov-16	218	222	98.2%	95.0%	3.2	G
Dec-16	220	223	98.7%	95.0%	3.7	G
Jan-17	220	223	98.7%	95.0%	3.7	G
Feb-17	221	221	100.0%	95.0%	5.0	G
Mar-17	233	235	99.1%	95.0%	4.1	G
Apr-17	209	210	99.5%	98.0%	1.5	G
May-17	212	218	97.2%	98.0%	-0.8	A
Jun-17	214	214	100.0%	98.0%	2.0	G
Jul-17	225	225	100.0%	98.0%	2.0	G
Aug-17	208	208	100.0%	98.0%	2.0	G
Sep-17	208	208	100.0%	98.0%	2.0	G
Oct-17	200	200	100.0%	98.0%	2.0	G
Nov-17	203	204	99.5%	98.0%	1.5	G
Dec-17	232	232	100.0%	98.0%	2.0	G
Jan-18	232	232	100.0%	98.0%	2.0	G
Feb-18						
Mar-18						

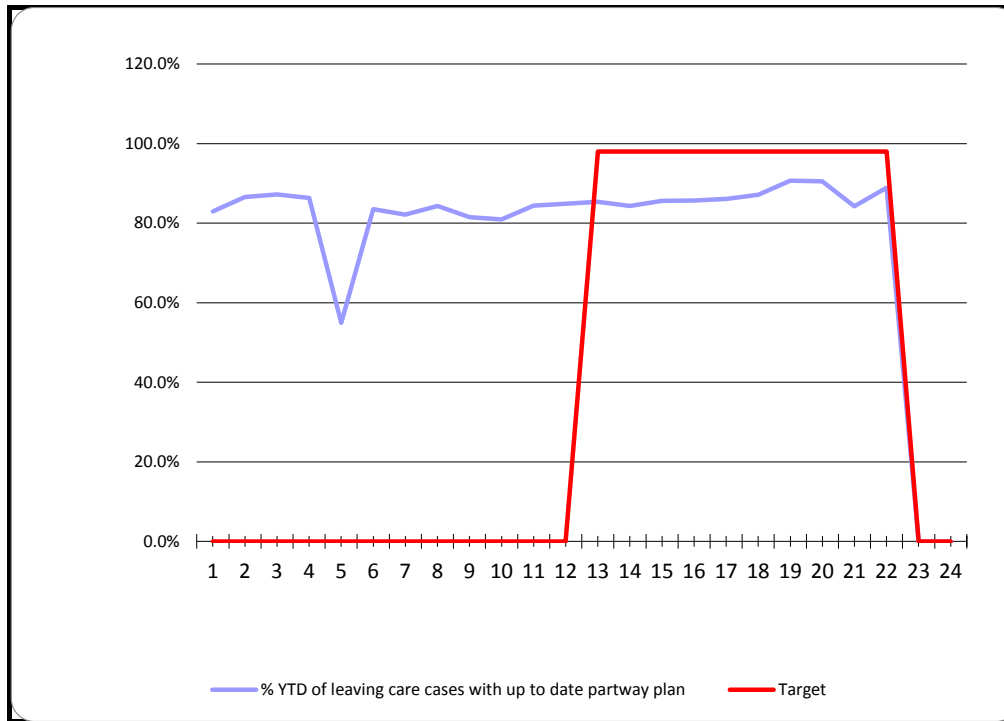
**CSC Commentary**

100% of PEPs were completed within timescale

**Definition**

The denominator is the number of children in care who are of school age. The numerator is of those children, the number that have a PEP added to the system. This has been addressed with managers.

**G = >98%**      **A=95%-97%**      **R < 95%**



Month	Num.	Denom.	% YTD	Target	Variance	RAG
Apr-16	175	211	82.9%			
May-16	187	216	86.6%			
Jun-16	184	211	87.2%			
Jul-16	183	212	86.3%			
Aug-16	117	213	54.9%			
Sep-16	177	212	83.5%			
Oct-16	175	213	82.2%			
Nov-16	183	217	84.3%			
Dec-16	181	222	81.5%			
Jan-17	191	236	80.9%			
Feb-17	200	237	84.4%			
Mar-17	202	238	84.9%			
Apr-17	204	239	85.4%	98.0%		A
May-17	204	242	84.3%	98.0%		R
Jun-17	208	243	85.6%	98.0%		A
Jul-17	209	244	85.7%	98.0%		A
Aug-17	210	244	86.1%	98.0%		A
Sep-17	217	249	87.1%	98.0%		A
Oct-17	224	247	90.7%	98.0%		A
Nov-17	228	252	90.5%	98.0%		A
Dec-17	214	254	84.3%	98.0%		A
Jan-18	217	244	88.9%	98.0%		A
Feb-18						
Mar-18						

**CSC Commentary**  
 Relevant managers are addressing the young people who require pathway plans. In analysing the data this is being affected by UASC and young people on remand and the data being recorded without the 3 month allowance which is affecting figures.

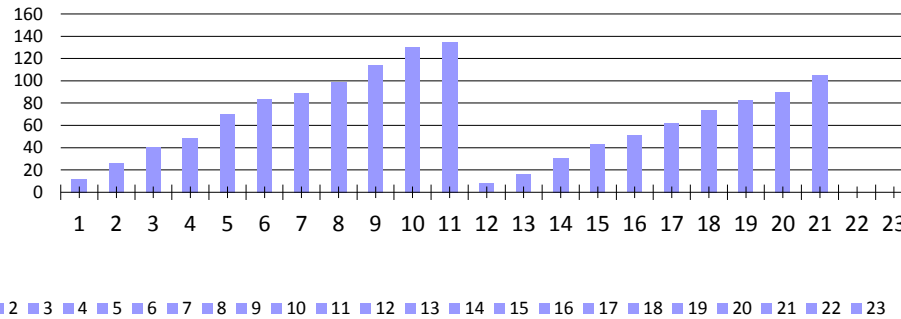
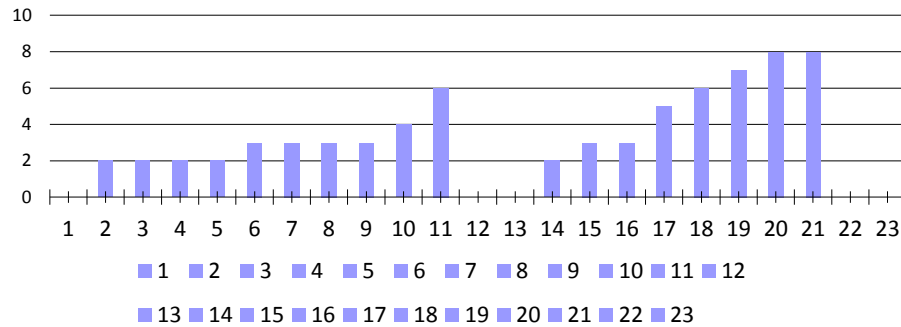
**Definition**  
 The percentage of leaving care cases with a pathway plan that has been updated within the last 6 months. The numerator is the number of children looked after cases assigned to the leaving care service that have a pathway plan which has been updated and recorded on Liquidlogic within the previous 6 months. The denominator is the number of children looked after assigned to the leaving care service as at the month end.

**G = 98%**    **A = 85-97%**    **R < 84%**



Care leavers (+19 Years) - Not in Suitable Accommodation

Jan-18



Month	Accomm	19+	%	Target	Variance	RAG
Apr-16	0	6	0.0%			
May-16	0	12	0.0%			
Jun-16	2	26	7.7%			
Jul-16	2	41	4.9%			
Aug-16	2	49	4.1%			
Sep-16	2	70	2.9%			
Oct-16	3	84	3.6%			
Nov-16	3	89	3.4%			
Dec-16	3	99	3.0%			
Jan-17	3	114	2.6%			
Feb-17	4	130	3.1%			
Mar-17	6	135	4.4%			
Apr-17	0	8	0.0%	5.0%		G
May-17	0	16	0.0%	5.0%		G
Jun-17	2	31	6.5%	5.0%		R
Jul-17	3	43	7.0%	5.0%		R
Aug-17	3	51	5.9%	5.0%		R
Sep-17	5	62	8.1%	5.0%		R
Oct-17	6	74	8.1%	5.0%		R
Nov-17	7	83	8.4%	5.0%		R
Dec-17	8	90	8.9%	5.0%		R
Jan-18	8	105	7.6%	5.0%		R
Feb-18						
Mar-18						

YTD	42	563	7.5%			
-----	----	-----	------	--	--	--

**Definition**  
Former relevant care leavers open to the service aged 19, 20 or 21 and the proportion of those who declared themselves to be Not in Suitable Accommodation



Year	ER Result	SN Res	ENG Result
2013-14		-	-
2014-15		-	-
2015-16		-	-

This cohort includes those in custody and those who are of no fixed abode. Issues have been identified for those who have refused the option of supported accommodation and those who have been evicted from previous accommodation. This month has seen a number of young people who have refused alternative accommodation and or are currently in custody. Work is being undertaken to develop closer joint planning with our housing department to ensure all options have been considered.

68

Dec-16	Mar-17	Jun-17	Sep-17	Jan-18
--------	--------	--------	--------	--------

Children looked after	364	363	372	373	356
-----------------------	-----	-----	-----	-----	-----

Age

Under 1	16	18	20	16	23
1 to 4	38	34	26	21	18
5 to 9	71	69	71	68	67
10 to 15	137	137	148	159	149
16-17	101	105	105	106	99
18 or over	1	0	2	3	0

Gender

Male	206	199	208	213	204
Female	158	164	164	160	152

Legal Status

Interim care orders	45	50	60	53	48
Full care orders	174	181	183	193	198
Voluntary agreements	103	94	96	93	76
Freed adoption / placement order	40	36	31	31	32
Others	2	2	2	3	2

Placement

Foster carers - In House	167	176	162	157	159
Foster carers - Agency	106	97	114	109	96
Foster carers - Unknown	0	0	0	0	0
Fostering by relatives or friends	18	17	17	16	19
With parents	2	3	2	3	3
Independent living	28	23	29	34	26
Residential care homes	36	41	41	45	40
Other residential schools	3	3	0	0	1
Placed for adoption	4	3	5	5	8
Secure unit	0	0	1	2	0
Other	0	0	1	2	4

Dec-16	Mar-17	Jun-17	Sep-17	Jan-18
--------	--------	--------	--------	--------

Children looked after	364	363	372	373	356
-----------------------	-----	-----	-----	-----	-----

Ethnicity

White British	237	227	223	224	223
White Irish	0	0	0	0	0
White Other	37	40	46	41	34
<b>White</b>	<b>277</b>	<b>274</b>	<b>267</b>	<b>269</b>	<b>257</b>
Mixed White & Black Caribbean	5	6	5	3	4
Mixed White & Black African	5	5	5	4	3
Mixed White & Asian	18	19	21	21	20
Any other mixed background	14	13	14	16	15
<b>Mixed</b>	<b>36</b>	<b>42</b>	<b>43</b>	<b>45</b>	<b>42</b>
Indian	1	1	1	1	1
Pakistani	3	7	6	7	7
Bangladeshi	0	0	0	0	0
Any other Asian background	18	18	17	19	17
<b>Asian</b>	<b>22</b>	<b>22</b>	<b>26</b>	<b>24</b>	<b>25</b>
Caribbean	1	1	3	2	2
African	10	9	12	15	13
Any other Black background	8	8	8	8	7
<b>Black</b>	<b>19</b>	<b>19</b>	<b>18</b>	<b>23</b>	<b>22</b>
Chinese	0	0	0	0	0
Any other ethnic group	4	5	6	6	6
<b>Other</b>	<b>8</b>	<b>4</b>	<b>5</b>	<b>6</b>	<b>6</b>
Not stated / not yet obtained	3	4	5	4	4

Length of time in care

0 - 6 months	69	67	78	83	70
7 - 12 months	56	44	35	32	36
1 - 2 years	85	98	100	100	93
3 - 5 years	50	45	53	42	42
6 - 10 years	90	92	90	98	96
11 -15 years	14	17	16	18	18
16+ years	0	0	0	0	1